



iM2075 Storm

The Pelican™ Storm Case™ has the same legendary DNA as our Pelican Protector Case, with one primary difference: A unique Press and Pull latch that locks automatically, but open with a light touch. Guaranteed for life, the Pelican Storm case is made in the USA and engineered using the finest components.

- Guaranteed for life
- **Watertight, crushproof, and dustproof**
- Two Press & Pull Latches
- Two Padlockable Hasps
- Double-layered, Soft-grip Handle
- Vortex™ Valve
- Powerful Hinges
- Lightweight Strong HPX® Resin



CONFIGURATIONS



iM2075
Standard

iM2075-X0000
No Foam

iM2075-X0002
With Padded Dividers

iM2075-X0001
With Foam

BEER-412
4-Can Beer 12oz

BEER-416
4-Can Beer 16oz

BEER-612
6-Can Beer 12oz

BEER-616
6-Can Beer 16oz

DIMENSIONS

Interior (LxWxD)	9.50 x 7.50" x 7.25 (24.1 x 19.1 x 18.4 cm)
Exterior (LxWxD)	11.80 x 9.80" x 7.70 (30 x 24.9 x 19.6 cm)
Lid Depth	1.50" (3.8 cm)
Bottom Depth	5.75" (14.6 cm)
Total Depth	7.25" (18.4 cm)
Int Volume	0.3 ft ³ (0.008 m ³)
Padlock Hole Diameter	0.28" (0.7 cm)

MATERIALS

Body	Injection Molded HPX™ high performance resin
Latch	Valox - Polybutylene Terephthalate (PBT)
Latch (Alt)	Xenoy - Polyester/Polycarbonate blend
O-Ring	EPDM
Pins	Stainless Steel
Pins (Alt)	Aluminum
Foam	1.3/1.35 polyester
Purge Body	Valox - Polybutylene Terephthalate (PBT)
Purge Body (Alt)	Xenoy - Polyester/Polycarbonate blend
Purge Vent	Gortex membrane

COLOURS

- Black ■ OD Green ■ Yellow

WEIGHT

Weight With Foam	3.70 lbs (1.7 kg)
Weight Empty	3.30 lbs (1.5 kg)
Buoyancy	18.20 lbs (8.3 kg)
Master Pack Weight	18.20 lbs (8.3 kg)

TEMPERATURE

Minimum Temperature	-20°F (-28.9 °C)
Maximum Temperature	140°F (60 °C)

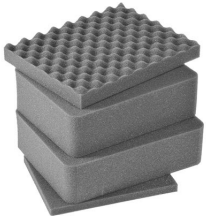
CERTIFICATIONS

IP67

OTHER

Master Pack	4
Military	yes

ACCESSORIES



iM2075-FOAM
4 pc. Replacement Foam Set



iM-VALVE-M-B
Manual Purge Valve



iM-STRAP-S-VER2
Padded Shoulder Strap



iM-LIDSTAY
Lid Stay



1506TSA
TSA Lock



1500D
Desiccant Silica Gel



1500CI
Corrosion Intercept Kit



iM20XX-BEZEL
Base Bezel Kit



iM20XX-M4-BEZEL
Base Bezel Kit (Metric)

Pelican

23215 Early Ave • Torrance, CA 90505 USA • Phone: (310) 326-4700 • (800) 473-5422 • Fax: (310) 326-3311
sales@pelican.com • www.pelican.com

Document created on 09-25-24