



1120 Protector

Sensitive equipment needs protection, and since 1976 the answer has been the Pelican™ Protector Case. These cases are designed rugged, and travel the harshest environments on earth. Against the extreme cold of the arctic or the heat of battle, Pelican cases have survived.

Made in the USA, these tough cases are designed with an automatic purge valve, that equalizes air pressure, a watertight silicone O-ring lid, over-molded rubber handles and stainless steel hardware.

- **Watertight, crushproof, and dustproof**
- Automatic Pressure Equalization Valve - balances interior pressure, keeps water out
- Lifetime Guarantee of Excellence
- O-ring seal
- Open cell core with solid wall design - strong, light weight
- Pick N Pluck™ with convoluted lid foam
- Stainless steel hardware



DIMENSIONS

Interior (LxWxD)	7.29 x 4.78" x 3.33 (18.5 x 12.1 x 8.5 cm)
Exterior (LxWxD)	8.41 x 6.76" x 3.87 (21.4 x 17.2 x 9.8 cm)
Lid Depth	0.50" (1.3 cm)
Bottom Depth	2.56" (6.5 cm)
Total Depth	3.06" (7.8 cm)
Int Volume	0.07 ft ³ (0.002 m ³)

MATERIALS

Body	Polypropylene
Latch	Polypropylene
O-Ring	Polymer
Pins	Stainless Steel
Foam	1.3 lb Polyurethane
Purge Body	ABS
Purge Vent	3 Micron Hydrophobic Non-Woven

COLORS

 Black	 Blue	 Desert Tan	 Orange
 OD Green	 Silver	 Yellow	

WEIGHT

Weight With Foam	1.43 lbs (0.6 kg)
Weight Empty	1.34 lbs (0.6 kg)
Master Pack Weight	10.45 lbs (4.7 kg)

TEMPERATURE

Minimum Temperature	-40°F (-40 °C)
Maximum Temperature	210°F (98.9 °C)

CERTIFICATIONS

IP67
Def Stan 81-41
STANAG 4280

OTHER

Master Pack	6
Military	yes

ACCESSORIES



1121
3 pc. Replacement Foam Set



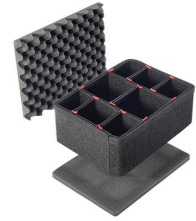
1123
Replacement O-ring



1120PF
Special Application Panel
Frame



1120TPDIV
Extra TrekPak Dividers



1120TPKIT
TrekPak Case Divider Kit



1507
Quick Mounts - set of 4



1506TSA
TSA Lock



1500D
Desiccant Silica Gel

Pelican

23215 Early Ave • Torrance, CA 90505 USA • Phone: (310) 326-4700 • (800) 473-5422 • Fax: (310) 326-3311
sales@pelican.com • www.pelican.com

Document created on 05-20-22