



1615

Air

Pelican™ Air cases are the first in a series of remarkable innovations engineered by Pelican, the pioneers of protective cases. For over 40 years Pelican has designed and crafted the most influential protective cases in the world, and we're just getting started. With the launch of the Pelican™ Air line of cases, we're redefining the future of protection with a remarkable union of light and tough.

- Automatic Purge Valve - Keeps water and dust out while balancing air pressure
- Retractable extension handle
- Super-light proprietary HPX²™ Polymer
- Business card holder
- Quiet Rolling Stainless-Steel Bearing Wheels
- Maximum airline check-in size*
- * Check with your airline for exact measurement requirements.



DIMENSIONS

Interior (L×W×D)	29.59 x 15.50" x 9.38 (75.2 x 39.4 x 23.8 cm)
Exterior (L×W×D)	32.58 x 18.40" x 11.02 (82.8 x 46.7 x 28 cm)
Lid Depth	2.00" (5.1 cm)
Bottom Depth	7.38" (18.7 cm)
Total Depth	9.38" (23.8 cm)
Int Volume	2.49 ft ³ (0.071 m ³)
Padlock Hole Diameter	5/16" (8 mm)

MATERIALS

Body	Proprietary Polypropylene Blend
Latch	ABS
O-Ring	EPDM
Purge Body	ABS
Purge Vent	Hi-Flow Gore-Tex 3 Micron Hydrophobic Non-Woven

COLORS

 Black	 Orange	 Silver	 Yellow
---	--	--	--

WEIGHT

Weight With Foam	17.60 lbs (8 kg)
Weight Empty	14.06 lbs (6.4 kg)
Buoyancy	169.20 lbs (76.7 kg)

TEMPERATURE

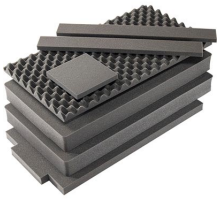
Minimum Temperature	-60°F (-51.1 °C)
Maximum Temperature	160°F (71.1 °C)

OTHER

Wheels

2

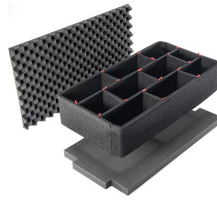
ACCESSORIES



1615AirFS
7 pc. Replacement Foam Set



1615AirDS
Padded Divider Set



1615TPKIT
TrekPak Case Divider Kit



1615TPDIV
Extra TrekPak Dividers



1506TSA
TSA Lock



1500D
Desiccant Silica Gel



PL2
Padlock (2 pack)

Pelican

23215 Early Ave • Torrance, CA 90505 USA • Phone: (310) 326-4700 • (800) 473-5422 • Fax: (310) 326-3311
sales@pelican.com • www.pelican.com

Document created on 11-28-21