



1606

Air

Pelican understands that finding the right protection, with the perfect fit for your gear, is a priority. Pelican™ Air began with long protection and quickly grew to offer you deep protection. The time has come to combine those two in order to create Pelican's new Long/Deep Series. Gone are the days of dangerously forcing your equipment into the wrong size case or leaving it unprotected with no other options. With Pelican's Long/Deep series, we've created the missing link so that no matter the demands of your gear, Pelican has you covered.

- Automatic Purge Valve - Keeps water and dust out while balancing air pressure
- Retractable extension handle
- Super-light proprietary HPX2™ Polymer
- Business card holder
- Quiet Rolling Stainless-Steel Bearing Wheels
- Press and Pull™ Latches



CONFIGURATIONS



1606
Standard



1606WF
With Foam



1606NF
No Foam

DIMENSIONS

Interior (LxWxD)	24.54 x 12.30" x 10.22 (62.3 x 31.2 x 26 cm)
Exterior (LxWxD)	27.42 x 15.13" x 11.83 (69.6 x 38.4 x 30 cm)
Lid Depth	2.00" (5.1 cm)
Bottom Depth	8.22" (20.9 cm)
Total Depth	10.22" (26 cm)
Int Volume	1.79 ft ³ (0.051 m ³)
Padlock Hole Diameter	5/16" (8 mm)

MATERIALS

Body	Proprietary Polypropylene Blend
Latch	ABS
O-Ring	EPDM
Purge Body	ABS
Purge Vent	Hi-Flow Gore-Tex 3 Micron Hydrophobic Non-Woven

COLORS

■ Black

WEIGHT

Weight With Foam	14.67 lbs (6.7 kg)
Weight Empty	12.45 lbs (5.6 kg)
Buoyancy	123.70 lbs (56.1 kg)

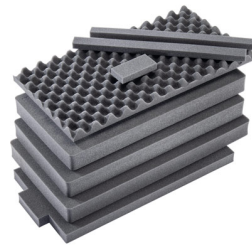
TEMPERATURE

Minimum Temperature	-60°F (-51.1 °C)
Maximum Temperature	160°F (71.1 °C)

ACCESSORIES



PL2
Padlock (2 pack)



1606AirFS
8 pc. Replacement Foam Set

Pelican

23215 Early Ave • Torrance, CA 90505 USA • Phone: (310) 326-4700 • (800) 473-5422 • Fax: (310) 326-3311
sales@pelican.com • www.pelican.com

Document created on 09-19-20