



## iM3100

### Storm

Long Case

The Pelican™ Storm Case™ has the same legendary DNA as our Pelican Protector Case, with one primary difference: A unique Press and Pull latch that locks automatically, but open with a light touch.

Guaranteed for life, the Pelican Storm case is made in the USA and engineered using the finest components.

- Six Press & Pull Latches
- Guaranteed For Life
- Two Padlockable Hasps
- Two Double-layered, Soft-grip Handles
- Vortex™ Valve
- Powerful Hinges
- O-ring seal
- Lightweight Strong HPX® Resin



## CONFIGURATIONS



**iM3100**  
Standard



**iM3100-X0000**  
No Foam



**iM3100-X0001**  
With Foam

## DIMENSIONS

<b>Interior (L×W×D)</b>	36.50 x 14.00" x 6.00 (92.7 x 35.6 x 15.2 cm)
<b>Exterior (L×W×D)</b>	39.80 x 16.50" x 6.70 (101.1 x 41.9 x 17 cm)
<b>Lid Depth</b>	2.00" (5.1 cm)
<b>Bottom Depth</b>	4.00" (10.2 cm)
<b>Total Depth</b>	6" (15.2 cm)
<b>Int Volume</b>	1.77 ft <sup>3</sup> (0.05 m <sup>3</sup> )
<b>Padlock Hole Diameter</b>	3/8" (10 mm)

## MATERIALS

<b>Body</b>	Injection Molded HPX™ high performance resin
<b>Latch</b>	Valox - Polybutylene Terephthalate (PBT)
<b>Latch (Alt)</b>	Xenoy - Polyester/Polycarbonate blend
<b>O-Ring</b>	EPDM
<b>Pins</b>	Stainless Steel
<b>Pins (Alt)</b>	Aluminum
<b>Foam</b>	1.3/1.35 polyester
<b>Purge Body</b>	Valox - Polybutylene Terephthalate (PBT)
<b>Purge Body (Alt)</b>	Xenoy - Polyester/Polycarbonate blend

**Purge Vent**

Gortex membrane

## COLOURS

 Black OD Green

## WEIGHT

<b>Weight With Foam</b>	19.80 lbs (9 kg)
<b>Weight Empty</b>	15.20 lbs (6.9 kg)
<b>Buoyancy</b>	113.07 lbs (51.3 kg)
<b>Master Pack Weight</b>	8.00 lbs (3.6 kg)

## TEMPERATURE

<b>Minimum Temperature</b>	-20°F (-28.9 °C)
<b>Maximum Temperature</b>	140°F (60 °C)

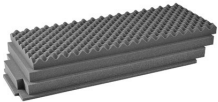
## CERTIFICATIONS

**IP67**

## OTHER

<b>Master Pack</b>	1
<b>Military</b>	yes

## ACCESSORIES



**iM3100-FOAM**  
4 pc. Replacement Foam Set



**iM-STRAP-S-VER2**  
Padded Shoulder Strap



**iM-LIDSTAY**  
Lid Stay



**1506TSA**  
TSA Lock



**1500D**  
Desiccant Silica Gel

**Pelican**

23215 Early Ave • Torrance, CA 90505 USA • Phone: (310) 326-4700 • (800) 473-5422 • Fax: (310) 326-3311  
[sales@pelican.com](mailto:sales@pelican.com) • [www.pelican.com](http://www.pelican.com)

Document created on 09-26-22