



iM2450 Storm

The Pelican™ Storm Case™ has the same legendary DNA as our Pelican Protector Case, with one primary difference: A unique Press and Pull latch that locks automatically, but open with a light touch. Guaranteed for life, the Pelican Storm case is made in the USA and engineered using the finest components.

- Guaranteed for life
- **Watertight, crushproof, and dustproof**
- Two Press & Pull Latches
- Two Padlockable Hasps
- Double-layered, Soft-grip Handle
- Vortex™ Valve
- Powerful Hinges
- Lightweight Strong HPX® Resin



CONFIGURATIONS



iM2450
Standard



iM2450-X0000
No Foam



iM2450-X0002
With Padded Dividers



iM2450-X0001
With Foam

DIMENSIONS

Interior (LxWxD)	18.00 x 13.00" x 8.40 (45.7 x 33 x 21.3 cm)
Exterior (LxWxD)	19.20 x 15.20" x 9.00 (48.8 x 38.6 x 22.9 cm)
Lid Depth	2.00" (5.1 cm)
Bottom Depth	6.40" (16.3 cm)
Total Depth	8.4" (21.3 cm)
Int Volume	1.14 ft ³ (0.032 m ³)
Padlock Hole Diameter	0.38" (1 cm)

MATERIALS

Body	Injection Molded HPX™ high performance resin
Latch	Valox - Polybutylene Terephthalate (PBT)
Latch (Alt)	Xenoy - Polyester/Polycarbonate blend
O-Ring	EPDM
Pins	Stainless Steel
Pins (Alt)	Aluminum
Foam	1.3/1.35 polyester
Purge Body	Valox - Polybutylene Terephthalate (PBT)
Purge Body (Alt)	Xenoy - Polyester/Polycarbonate blend
Purge Vent	Gortex membrane

COLORS

■ Black

■ OD Green

WEIGHT

Weight With Foam	8.90 lbs (4 kg)
Weight Empty	7.40 lbs (3.4 kg)
Buoyancy	70.86 lbs (32.1 kg)
Master Pack Weight	31.00 lbs (14.1 kg)

TEMPERATURE

Minimum Temperature	-20°F (-28.9 °C)
Maximum Temperature	140°F (60 °C)

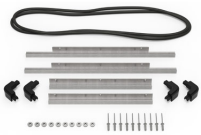
CERTIFICATIONS

IP67

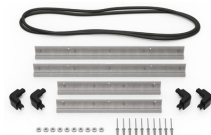
OTHER

Master Pack	3
Military	yes

ACCESSORIES



iM2450-BEZEL-LID
Lid Bezel Kit



iM2450-BEZEL
Base Bezel Kit



iM2450-FOAM
5 pc. Replacement Foam Set



iM-STRAP-S-VER2
Padded Shoulder Strap



iM-LIDSTAY
Lid Stay



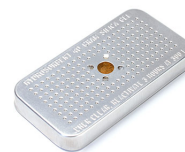
iM2450TPKIT
TrekPak Case Divider Kit



iM2450TPDIV
Extra TrekPak Dividers



1506TSA
TSA Lock



1500D
Desiccant Silica Gel



1500CI
Corrosion Intercept Kit

Pelican

23215 Early Ave • Torrance, CA 90505 USA • Phone: (310) 326-4700 • (800) 473-5422 • Fax: (310) 326-3311
sales@pelican.com • www.pelican.com

Document created on 10-31-24