



1637

Air

Meet the lightest premium Protector™ case on the planet. Up to 40% lighter than other polymer cases.

Pelican™ Air cases are the first in a series of remarkable innovations engineered by Pelican, the pioneers of protective cases. For over 40 years Pelican has designed and crafted the most influential protective cases in the world, and we're just getting started.

With the launch of the Pelican™ Air line of cases, we're redefining the future of protection with a remarkable union of light and tough.

- Automatic pressure equalization valve - balances interior pressure, keeps water out
- Fold down over-molded handle
- Retractable extension trolley handle
- Stainless steel padlock protectors
- Business card holder
- Quiet rolling stainless-steel bearing wheels
- Press and Pull™ Latches
- Limited Lifetime Warranty
- Super-light proprietary HPX²™ Polymer - up to 40% lighter
- Waterproof O-ring seal
- User-customizable Pick N Pluck™ foam
- Waterproof, crushproof, dustproof
- IP67 & MIL-SPEC certified
- Made in the USA



CONFIGURATIONS



1637
Standard



1637NF
No Foam



1637WD
With Padded Dividers



1637WF
With Foam



WINE-12B
12-Bottle Wine

DIMENSIONS

Interior (L×W×D)	23.43 x 17.55" x 13.25 (59.5 x 44.6 x 33.7 cm)
Exterior (L×W×D)	26.61 x 20.65" x 14.87 (67.6 x 52.5 x 37.8 cm)
Lid Depth	2.00" (5.1 cm)
Bottom Depth	11.20" (28.4 cm)
Total Depth	13.2" (33.5 cm)
Int Volume	3.15 ft³ (0.089 m³)
Padlock Hole Diameter	0.31" (0.8 cm)

MATERIALS

Body	Proprietary Polypropylene Blend
Latch	ABS
O-Ring	EPDM
Purge Body	ABS

Purge Vent

Hi-Flow Gore-Tex 3 Micron Hydrophobic Non-Woven

COLORS Black Orange Silver Yellow**WEIGHT**

Weight With Foam	19.40 lbs (8.8 kg)
Weight Empty	15.20 lbs (6.9 kg)
Buoyancy	209.00 lbs (94.8 kg)

TEMPERATURE

Minimum Temperature	-60°F (-51.1 °C)
Maximum Temperature	160°F (71.1 °C)

OTHER

Wheels	2
---------------	---

ACCESSORIES

1506TSA
TSA Lock



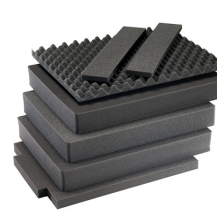
1500D
Desiccant Silica Gel



1637AirDS
Padded Divider Set



1500CI
Corrosion Intercept Kit



1637AirFS
7 pc. Replacement Foam Set

Pelican

23215 Early Ave • Torrance, CA 90505 USA • Phone: (310) 326-4700 • (800) 473-5422 • Fax: (310) 326-3311
sales@pelican.com • www.pelican.com

Document created on 06-01-24