



1750

Protector

Long Case

Sensitive equipment needs protection, and since 1976 the answer has been the Pelican™ Protector Case. These cases are designed rugged, and travel the harshest environments on earth. Against the extreme cold of the arctic or the heat of battle, Pelican cases have survived. Made in the USA, these tough cases are designed with an automatic purge valve, that equalizes air pressure, a watertight silicone O-ring lid, over-molded rubber handles and stainless steel hardware.

- **Strong polyurethane wheels with stainless steel bearings**
- **Watertight, crushproof, and dustproof**
- 3-piece foam set
- Automatic pressure equalization valve - balances interior pressure, keeps water out
- Easy open double-throw latches
- O-ring seal
- Open cell core with solid wall design - strong, light weight
- Stainless steel hardware and padlock protectors
- 12 lid bosses for mounting of multiple 1500MP EZ-Click™ MOLLE Panels
- Fold-down side handles on both ends additional carrying options
- New fold-down over-molded top and side handles
- *1500 EZ-Click™ MOLLE Panels sold separately. Now available for purchase



CONFIGURATIONS



DIMENSIONS

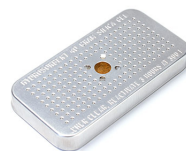
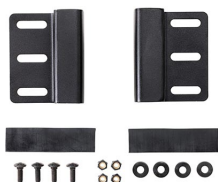
Interior (LxWxD)	50.38 x 13.33" x 5.33 (128 x 33.9 x 13.5 cm)
Exterior (LxWxD)	53.60 x 16.05" x 6.13 (136.1 x 40.8 x 15.6 cm)
Int Volume	2.07 ft³ (0.059 m³)
Padlock Hole Diameter	0.31" (0.8 cm)

MATERIALS

Body	Polypropylene
Latch	ABS
O-Ring	Polymer
Pins	Stainless Steel
Foam	1.3 lb Polyurethane
Purge Body	ABS

Purge Vent

3 Micron Hydrophobic Non-Woven

COLORS Black Desert Tan OD Green**WEIGHT****Weight With Foam** 26.70 lbs (12.1 kg)**Weight Empty** 21.00 lbs (9.5 kg)**TEMPERATURE****Minimum Temperature** -40°F (-40 °C)**Maximum Temperature** 210°F (98.9 °C)**OTHER****Nameplate** yes**ACCESSORIES****1500MP**
EZ-Click™ MOLLE Panel**1500CI**
Corrosion Intercept Kit**1506TSA**
TSA Lock**1500D**
Desiccant Silica Gel**1753**
Replacement O-ring**1751FS**
3 pc. Replacement Foam Set**LGMT-001P**
Protector Case Roof Mount**Pelican**23215 Early Ave • Torrance, CA 90505 USA • Phone: (310) 326-4700 • (800) 473-5422 • Fax: (310) 326-3311
sales@pelican.com • www.pelican.com*Document created on 06-01-24*